



PREMIER
CONCRETE PRODUCTS

Premier Wall 8 is the high performance block preferred by architects, builders, developers, and engineers worldwide. It is known for its ease of installation, strength, and versatility. Premier Wall 8 provides extra support for the most critical applications. Whether the wall is supporting a retail development or backyard sanctuary, it is the best solution for any type of retaining wall application.



www.premier-concrete.com

Hardscape**Walls**

Building Premier Concepts

Strength ■ Ease of Installation ■ Versatility

Premier Wall 8

Segmental Retaining Wall



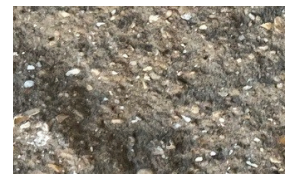
- **Only 54 pounds** - *reduces installer fatigue and promotes productivity*
- 8" H x 18" W x 12"D
- Allows for 864 sq ft per truckload unlike competition
- Modern straight face
- Fillable cores, integrated anchor bar
- Adjustable set back
- No cumbersome / expensive pins or clips needed
- Vertical stone columns increase grid connection, strength and shear capacity
- Capable of tight radius turns



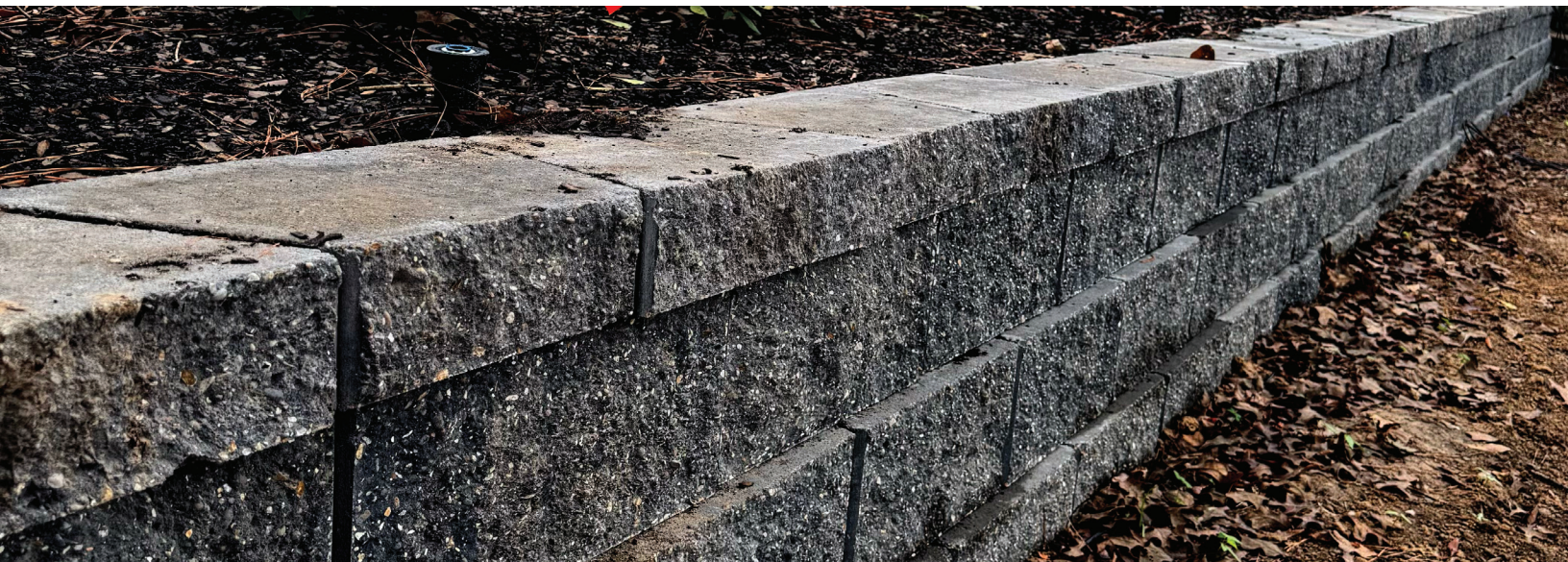
Grey
C825GR



Parish Grey Blend
Grey, Black
C825 PG



Cypress Brown Blend
C825CB



PREMIER
CONCRETE PRODUCTS

38200 Hwy 16
Denham Springs, LA 70706
225 667 4545

Lindsay Martin
Hardscapes Manager

346-257-1312
lmartin@premier-concrete.com

[PLEASE NOTE: ACTUAL COLORS MAY VARY. WE DO OUR BEST TO ENSURE THAT OUR PHOTOS ARE AS TRUE TO COLOR AS POSSIBLE.]